

TOBIN EYEWASH SYSTEM

INDUSTRIAL EYEWASH SOLUTION STATION

An eyewash should be quick, simple and safe to use. The unique shape of Tobin's eyewash bottle insures that even a temporarily blinded and confused person can identify it as a safe eyewash.

TOBIN'S EYEWASH SYSTEMS are a well proven, quick and safe way to wash chemicals from the eyes. This specially designed system gives the fastest possible application combined with a volume large enough for most eye accidents.

TOBIN SALINE SOLUTION

ITEM CODE	PRODUCT NAME	CAPACITY	WEIGHT	DIMENSIONS	DETAILS	LOAD (UDL)	UOM
TOB127	TRANSPORT STAND WALL AND BENCH MOUNT INCLUDING 2 X 1000ML BOTTLES WITH SALINE EYEWASH SOLUTION	2 X 1000L	2.8 kg	210 X 375 X 115mm	0	0	EACH
TOB130	DUST PROTECTED CABINET WALL MOUNT INCLUDING 2 X 1000ML BOTTLES WITH SALINE EYEWASH SOLUTION	2 X 1000L	3.5 kg	260 X 385 X 115mm	0	0	EACH
TOB126	REPLACEMENT 2 X 1000ML BOTTLES WITH SALINE EYEWASH SOLUTION	2 X 1000L	2.4 kg	210 X 375 X 115mm	0	0	EACH

TOBIN PHOSPHATE BUFFERED SOLUTION FOR STRONG BUFFERING EFFECT AGAINST ACID SOLUTIONS

ITEM CODE	PRODUCT NAME	CAPACITY	WEIGHT	DIMENSIONS	DETAILS	LOAD (UDL)	UOM
TOB231	TRANSPORT STAND WALL AND BENCH MOUNT INCLUDING 2 X 1000ML BOTTLES WITH PHOSPHATE BUFFERED EYEWASH SOLUTION	2 X 1000L	2.8 kg	210 X 375 X 115mm	0	0	EACH
TOB234	DUST PROTECTED CABINET WALL MOUNT INCLUDING 2 X 1000ML BOTTLES WITH PHOSPHATE BUFFERED EYEWASH SOLUTION	2 X 1000L	3.5 kg	260 X 385 X 115mm	0	0	EACH
TOB226	REPLACEMENT 2 X 1000ML BOTTLES WITH PHOSPHATE BUFFERED EYEWASH SOLUTION	2 X 1000L	2.4 kg	210 X 375 X 115mm	0	0	EACH

TOBIN BORATE BUFFERED SOLUTION FOR STRONG BUFFERING EFFECT AGAINST ALKALINE SOLUTIONS

ITEM CODE	PRODUCT NAME	CAPACITY	WEIGHT	DIMENSIONS	DETAILS	LOAD (UDL)	UOM
TOB425	TRANSPORT STAND WALL AND BENCH MOUNT INCLUDING 2 X 1000ML BOTTLES WITH BORATE BUFFERED EYEWASH SOLUTION	2 X 1000L	2.8 kg	210 X 375 X 115mm	0	0	EACH
TOB431	DUST PROTECTED CABINET WALL MOUNT INCLUDING 2 X 1000ML BOTTLES WITH BORATE BUFFERED EYEWASH SOLUTION	2 X 1000L	3.5 kg	260 X 385 X 115mm	0	0	EACH
TOB426	REPLACEMENT 2 X 1000ML BOTTLES WITH BORATE BUFFERED EYEWASH SOLUTION	2 X 1000L	2.4 kg	210 X 375 X 115mm	0	0	EACH



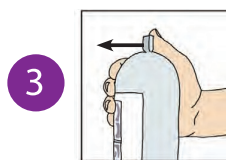
SALINE



PHOSPHATE



BORATE



WITHIN ARMS REACH: Chemicals in the eye cause serious damage within 1-5 seconds (see page 7). Washing that begins within a few seconds can be decisive in minimizing eye damage. A temporarily blinded person trying to reach an eyewash a few meters away requires presence of mind, a good sense of direction and an obstacle free passage. An eyewash should be within arms reach.

CONTROLLED FLOW: According to Prof. Tengroth at the Eye Clinic at St. Eriks Hospital in Stockholm it is important that damaged eyes are washed by a soft flow. Tobin's bottle is constructed to empty under natural pressure giving a soft flow. When the bottom airvent is opened a patient cannot increase the flow by squeezing the bottle. A bottle gives approx. 3 minutes washing time.

SHELF LIFE: As the bottles are disposable, costly refill routines are unnecessary. The contents of the bottle have a 3 year shelf life. Each bottle has an expiry date clearly visible.

VOLUME: Uninterrupted washing over a long period is particularly important. The 5 bottle stand gives approx. 15 minutes washing. Further bottles can be taken from other stands if required.

TRANSPORT: Bottles can easily be removed from the stand and taken along during transportation to a doctor. It is very easy to open the bottles by hand. It is possible to control the flow by placing the thumb over the bottom hole.

DUST COVERS: A simple plastic bag accompanies each bottle. It keeps the bottles clean in dusty/dirty environments.

LOW PRICE: The cost of a wallstand with 5 bottles is low, making it possible to give each danger spot its own eyewash station.

STERILITY: The regulations governing sterile liquids are rigorous. The bottle cannot contain any bacteria during its shelf life. When a bottle is opened the contents must be used within few hours or thrown away. The manufacturing of all Tobin eyewash liquids comply with the European and Swedish regulations in the standards SS-EN ISO 9002, SS-EN 46002, SS-EN 552 and SS-EN 556. They also comply with the German DIN 12930 standard.

EASY TO OPEN: The bottles are easy to open as is illustrated on each individual bottle and on most stands.